

# MONTHLY MEMBERSHIP PROGRESS REPORT

LOCATION OHIO

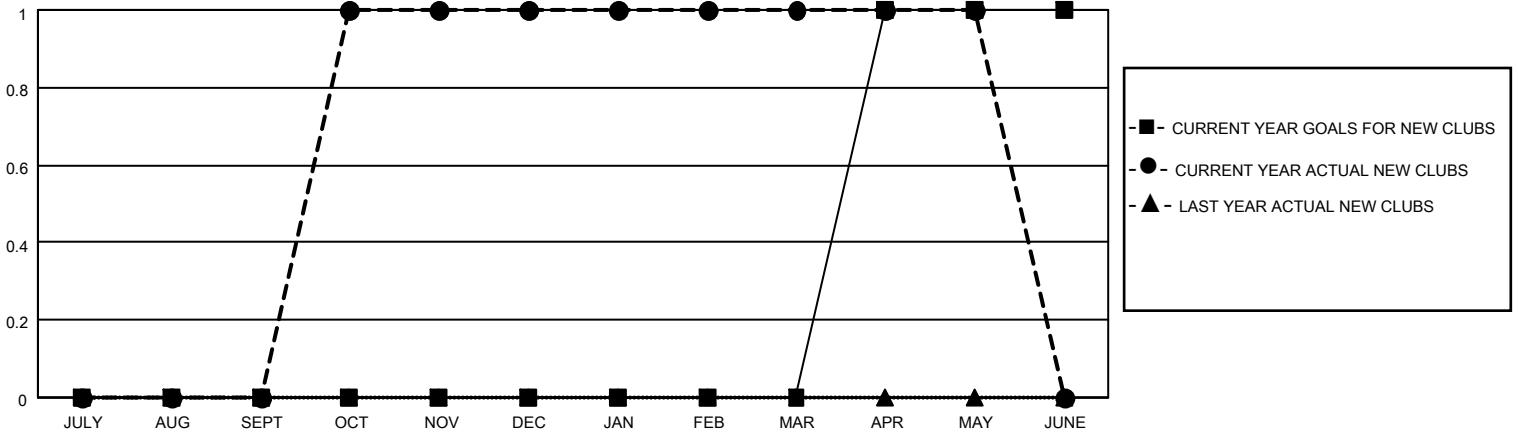
District 13 OH6

Results as of: 5/31/2021

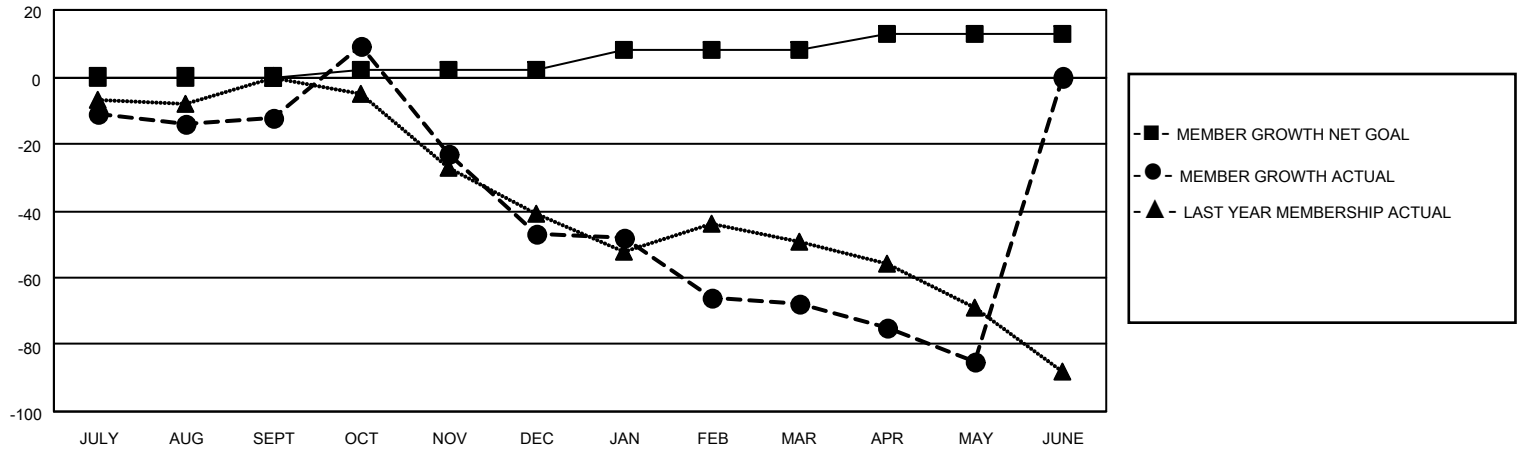
Clubs			
RESULTS FOR 2020-2021			
QUARTER	NEW CLUB GOAL	NEW CLUBS	DROPPED CLUBS
JULY/AUG/SEPT	0	0	0
OCT/NOV/DEC	0	1	3
JAN/FEB/MAR	0	0	0
APR/MAY/JUNE	1	0	0

Members			
RESULTS FOR 2020-2021			
QUARTER	MEMBER GROWTH NET GOAL	MEMBER GROWTH ACTUAL	DROPPED MEMBERS ACTUAL (including transfers)
JULY/AUG/SEPT	0	11	23
OCT/NOV/DEC	2	45	77
JAN/FEB/MAR	6	25	41
APR/MAY/JUNE	5	14	29

**GOALS AND ACTUAL NEW CLUBS CUMULATIVE**



**GOALS AND ACTUAL MEMBERS CUMULATIVE**



DROPPED CLUBS: 3	24 CLUBS OF 60 ADDED 1 OR MORE NEW MEMBERS	<u>GENDER DISTRIBUTION</u>
<u>DROPPED MEMBERS</u>		MALE            1,137 (70.67%)
DECEASED            31		FEMALE        472 (29.33%)
CLUB CANCELLED    29	<a href="#">CLICK HERE FOR CUMULATIVE MEMBERSHIP DATA</a>	TOTAL FAMILY UNIT MEMBERS            381
OTHER                110		FAMILY MEMBERS PAYING HALF DUES            197
<b>TOTAL                170</b>		